

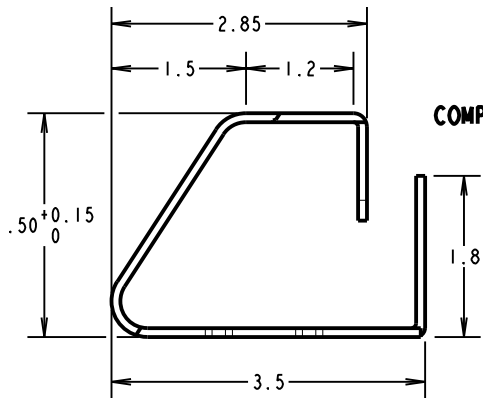
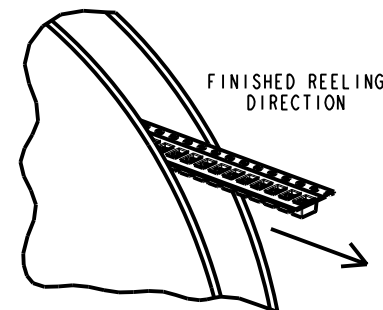
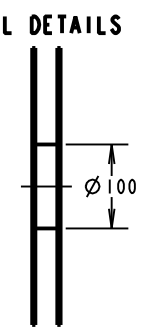
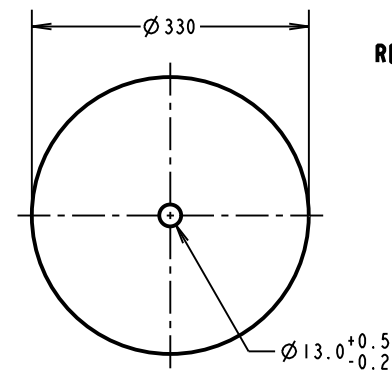
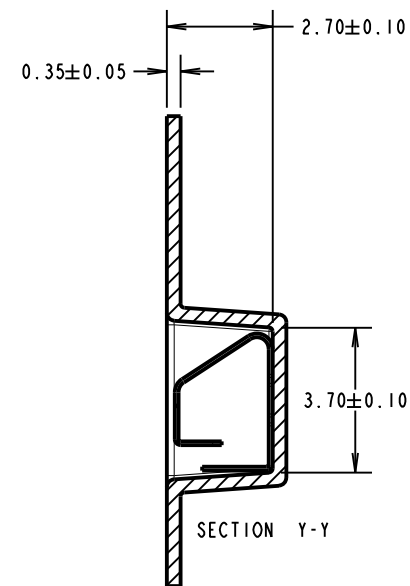
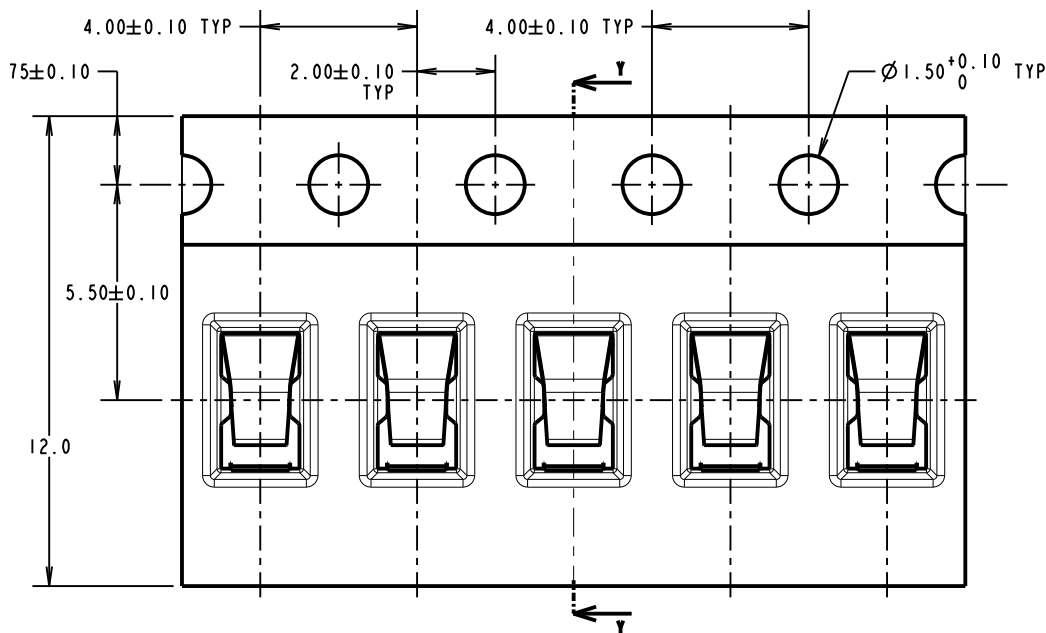
# 2901-03 - 2.5mm high Spring Contact

Drawing Number: 14471

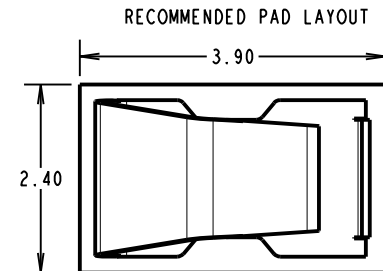
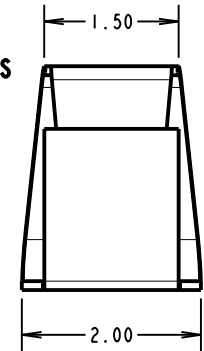
All dimensions in mm

Need to scale

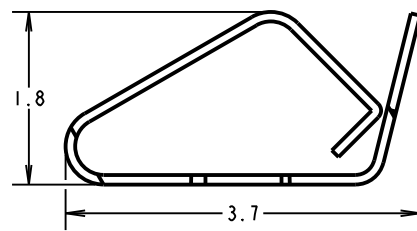
Third angle protection



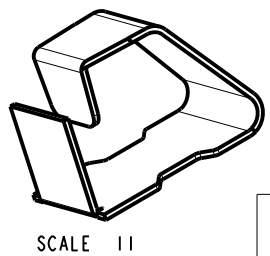
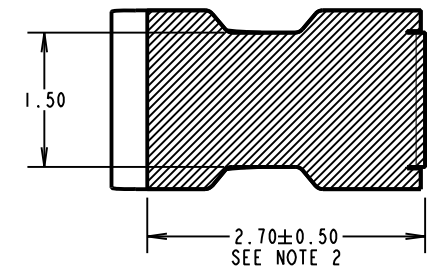
COMPONENT DETAILS



COMPONENT AT MINIMUM RECOMMENDED HEIGHT



COMPONENT SPECIFICATION:  
 MATERIAL = TITANIUM COPPER ALLOY,  
 0.10mm THICK  
 FINISH = 0.7µ-1.3µ NICKEL ALL OVER,  
 2.54µ MIN 100% MATTE TIN ON  
 FOOT AREA.  
 RECOMMENDED WORKING HEIGHT = 2.10mm / MIN FORCE = 1.2N  
 RECOMMENDED MINIMUM WORKING HEIGHT = 1.80mm  
 ELECTRICAL:  
 CURRENT RATING = 5A  
 MECHANICAL:  
 DURABILITY = 3500 CYCLES  
 ENVIRONMENTAL:  
 OPERATING TEMPERATURE = -55°C TO +125°C



NOTES:  
 1. QUANTITY PER REEL = 6000.  
 2. AREA FOR MATTE TIN PLATE.  
 3. ALL TOLERANCES ARE: X.X = ±0.30mm  
 X.XX = ±0.15mm  
 UNLESS OTHERWISE STATED.

	13-06-2016	14471
	Date	Number
Approved: Arend Langendam		
Drawing: Christian van Vugt		
Customer reference:		
Assembly DRG:		

**Holland Shielding Systems BV**

Holland Shielding Systems BV  
 Jacobus IJpsweg 124  
 3316BP Dordrecht  
 the Netherlands

E-mail: info@hollandshielding.com  
 Phone: +31(0)78-2049000  
 Fax: +31(0)78-2049008

Tolerances	See above
x = -1mm	
xx = -0.25mm	
xxx = -0.15mm	
xxxx = -0.1mm	
Angles	
Unless stated	

Material:	See above
Finish:	See above
S/Area:	mm <sup>2</sup>

Title:	2901-03 - 2.5mm high Spring Contact Technical Drawing
Drawing:	2901-03 - 2.5mm